



Welcome To Cambridge Court!

With mature landscaping, two sparkling swimming pools, controlled access, a 24-hour fully equipped fitness center and much more, it's easy to see why Cambridge Court is a great alternative to the hustle and bustle of city living! Cambridge Court's great location offers schools, parks, YMCA nearby, and much more; all within the Fort Worth ISD.

Located West of Downtown Fort Worth, just south of Hwy 377, close to the beautiful Western Hills North sub-division, you'll find peace of mind in a tranquil setting - welcome to Cambridge Court.

COMMUNITY AMENITIES

- 2 Sparkling Pools
- Convenient to Shopping, Dining & Entertainment
- Controlled Access
- Fitness Center
- Clubhouse Available for parties, etc.
- Courtesy Patrol
- 24-Hour Maintenance
- Professional On-site Management

*Available in select homes.

FLOOR PLAN TYPES

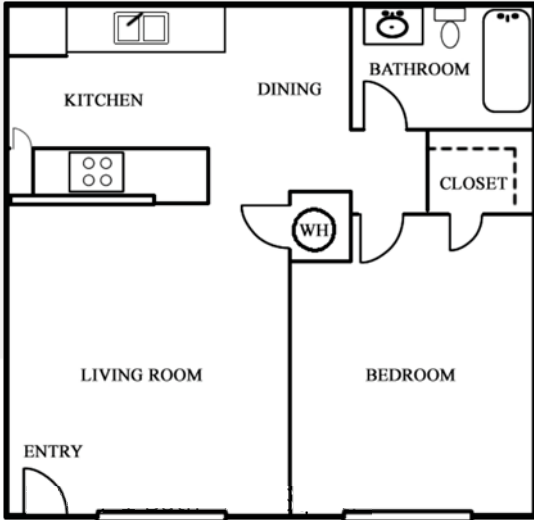
- 1 Bed / 1 Bath 602-799 Sq. Ft.*
- 2 Bed / 1 Bath 899 Sq. Ft.*
- 2 Bed / 2 Bath 1,020-1,147 Sq. Ft.*
- 3 Bed / 2 Bath 1,269 Sq. Ft.*

INTERIORS

- Spacious 1, 2 & 3 Bedroom Apartments
- Newly Remodeled Apartment Homes
- Energy Efficient Appliances
- Ample Cabinet Space
- Double Stainless-Steel Sinks
- White on White Appliances
- Built-in Microwave Ovens*
- Dishwashers



FLOOR PLAN TYPES

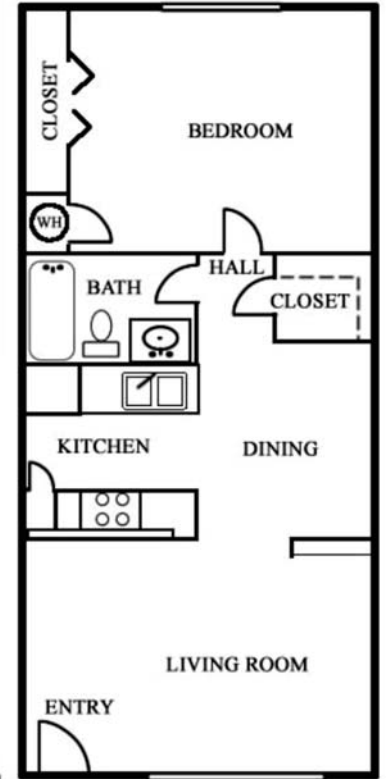


Type F

1 Bed / 1 Bath 602 Sq. Ft.*

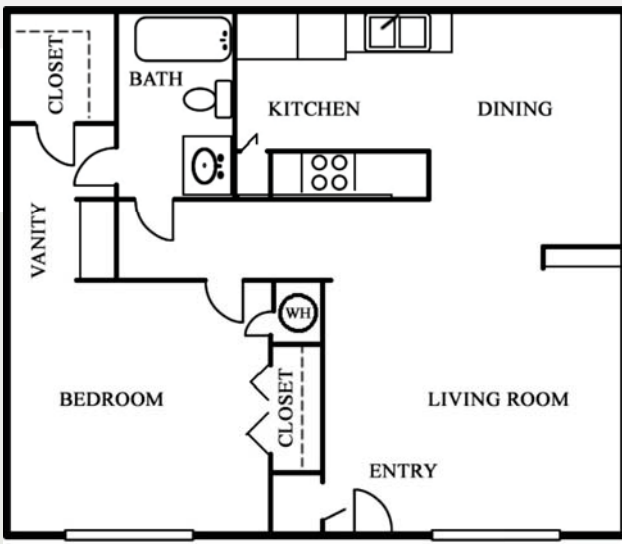
Type J

1 Bed / 1 Bath 620 Sq. Ft.*

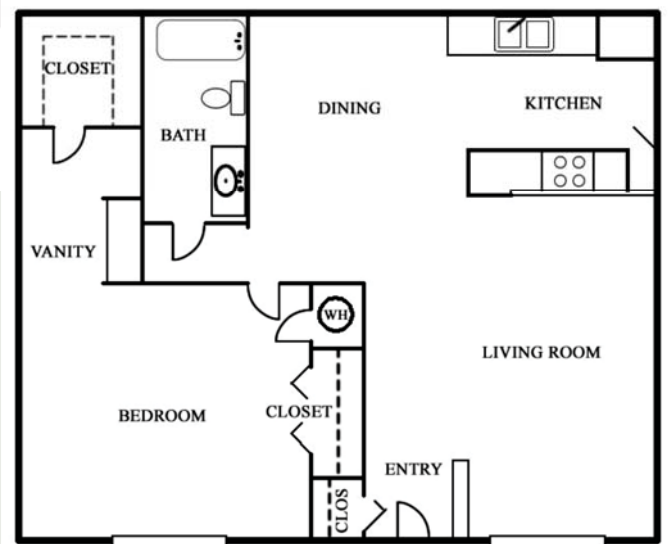


Plan C

1 Bed / 1 Bath 694 Sq. Ft.*

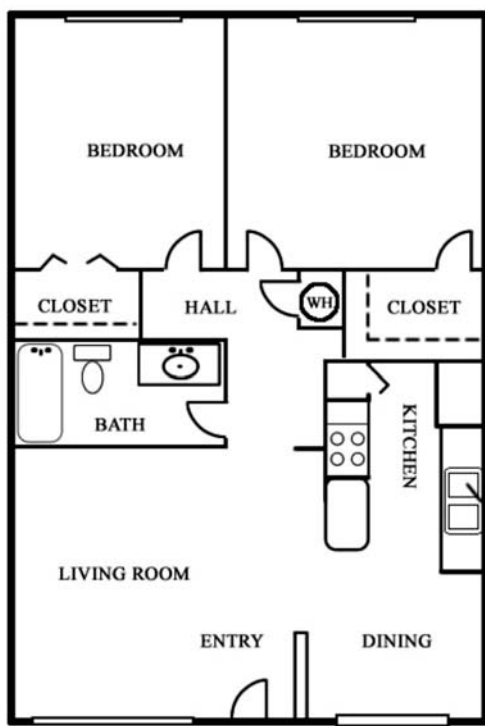


Plan E 1 Bed / 1 Bath 744 Sq. Ft.*



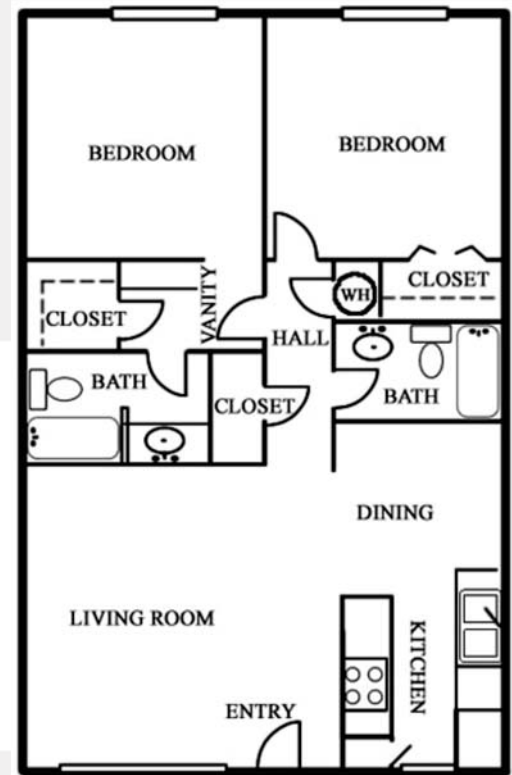
Plan D 1 Bed / 1 Bath 799 Sq. Ft.*

FLOOR PLAN TYPES



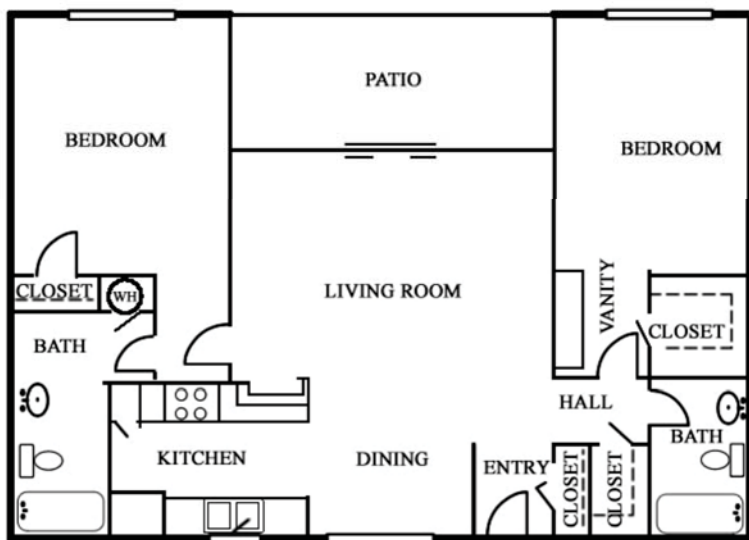
Plan B

2 Bed / 1 Bath 899 Sq. Ft.*

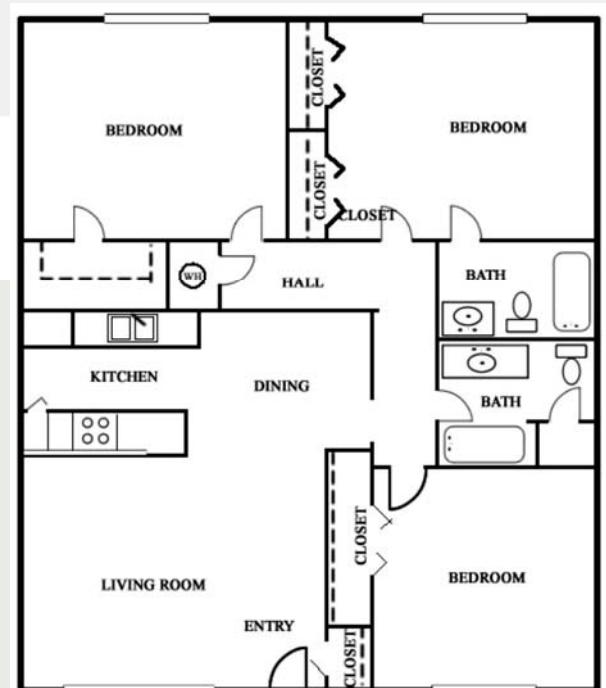


Plan A

2 Bed / 2 Bath 1,020 Sq. Ft.*



Plan G 2 Bed / 2 Bath 1,147 Sq. Ft.*



Plan H 3 Bed / 2 Bath 1,269 Sq. Ft.*